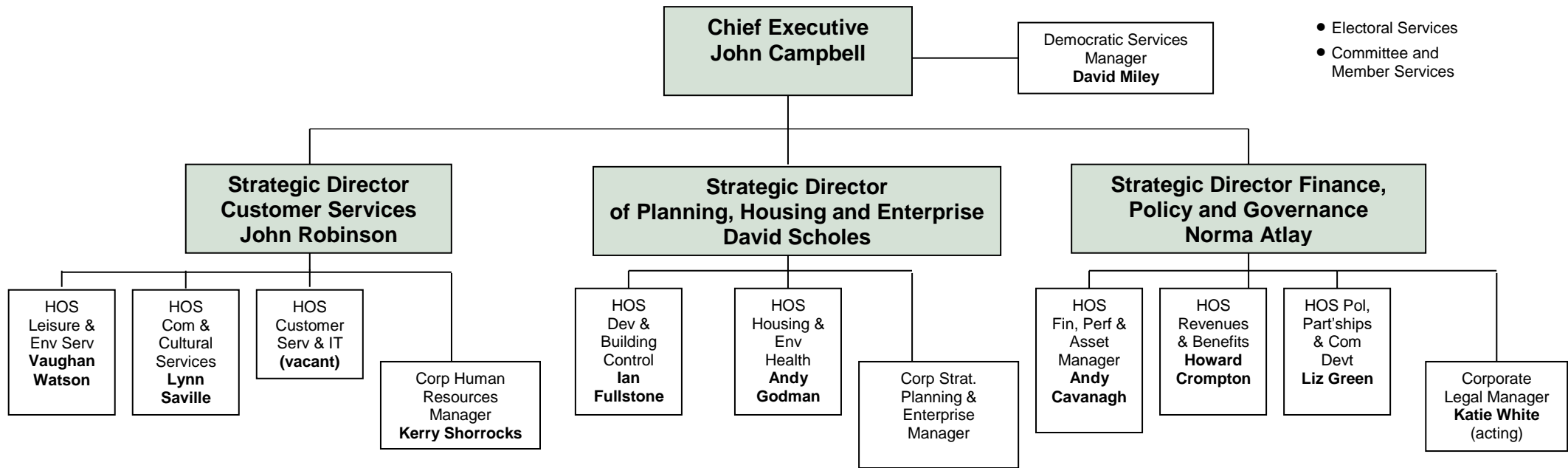


North Hertfordshire District Council

SENIOR MANAGEMENT ARRANGEMENTS/FUNCTIONS

From June 2009



- | | | | | | | | | | | |
|--|--|--|---|--|---|--|---|--|--|---|
| <ul style="list-style-type: none"> • Leisure Services • Parking Enfor • Public Conv • Projects • Markets Client • Parks & Countryside • Allotments • Grounds Main • Cemeteries • Waste Manag • Street Cleansing • Emergency Planning | <ul style="list-style-type: none"> • Children's Services • Sports Dev • Leisure Dir • Halls & Centres • Museums • Careline • Business Dev • Communications • Consultation • PR | <ul style="list-style-type: none"> • IT • BPI • Information Unit • FOI/DPA • Customer Services • Reprographics | <ul style="list-style-type: none"> • Employee Relations • Learning & Dev • Shared Services | <ul style="list-style-type: none"> • Building Control • Planning Control & Conservation • Technical Support • Quality, Compliance and Monitoring | <ul style="list-style-type: none"> • Commercial Team EH • Env Protection • Licensing & Enforcement • Housing Needs • Strategy, Dev & Renewal • Community Safety | <ul style="list-style-type: none"> • Economic Development • Regional and Strategic Planning • LDF • Projects • Parking Strategy | <ul style="list-style-type: none"> • Accountancy • Treasury Mgt • Property Services • Asset Mgt • Audit and Consultancy • Risk Mgt & Insurances • Performance & Quality • Programme Mgt | <ul style="list-style-type: none"> • Revs and Benefits • Systems & Technical • Investigation • MSU inc. Land Charges | <ul style="list-style-type: none"> • Area Committees • Com Dev • Corporate Policy • Comm strategy • Scrutiny • Grants • Parish Challenge • 50+ | <ul style="list-style-type: none"> • Legal Services • Monitoring Officer role |
|--|--|--|---|--|---|--|---|--|--|---|

**Strategic
Director
Financial
&
Regulator**