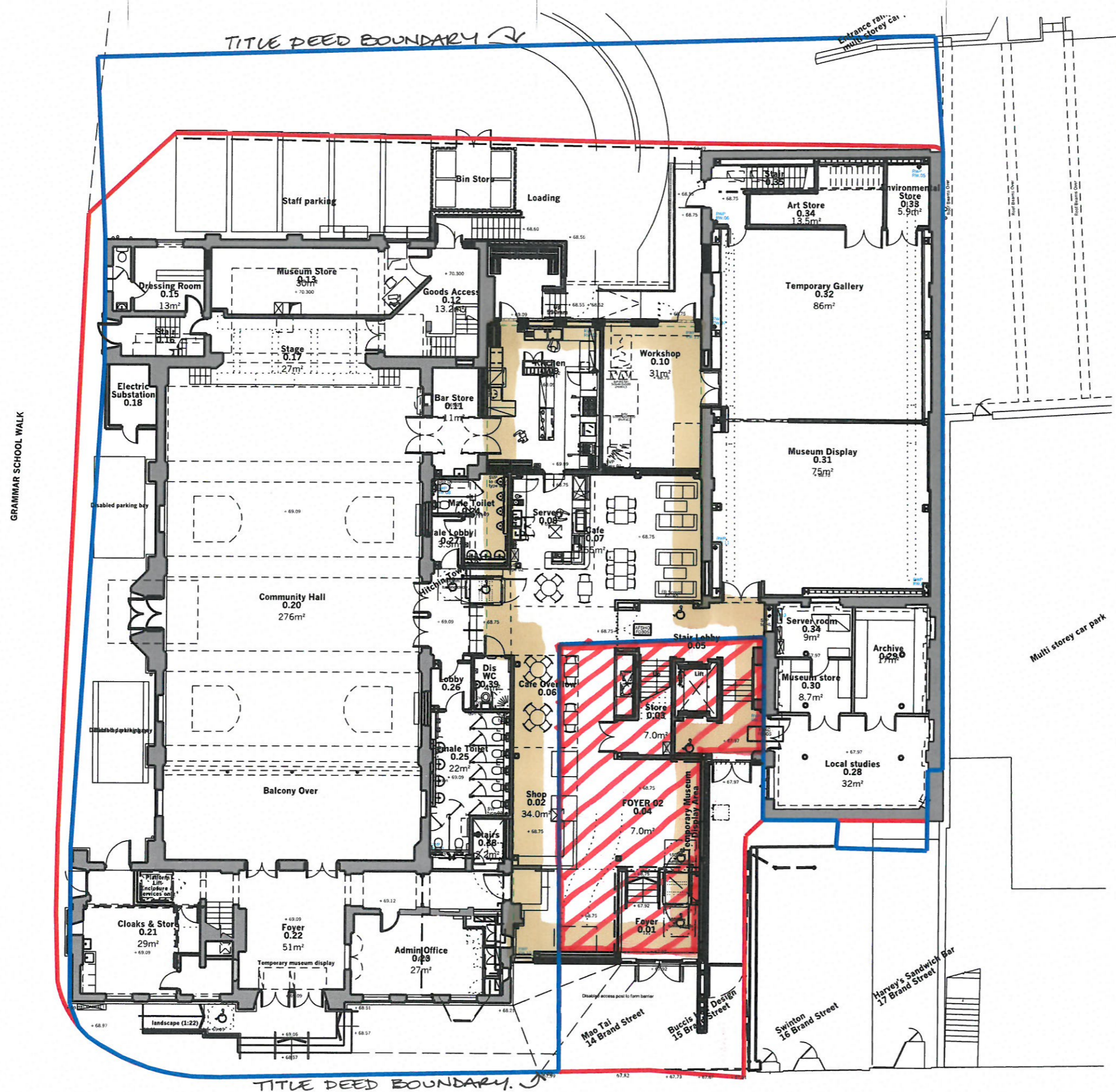




Do not scale from drawing  
Dimensions are to be  
checked on site  
If in doubt please ask



 NEW BUILD GIFA  
 GF = 302 m<sup>2</sup> + FF = 257 m<sup>2</sup>  
 TOTAL = 559 m<sup>2</sup>

 EX 14/15 BRAND ST.  
 GIFA = GF 113.7 m<sup>2</sup>  
 FF 88.6 m<sup>2</sup>  
 TOTAL = 202 m<sup>2</sup>

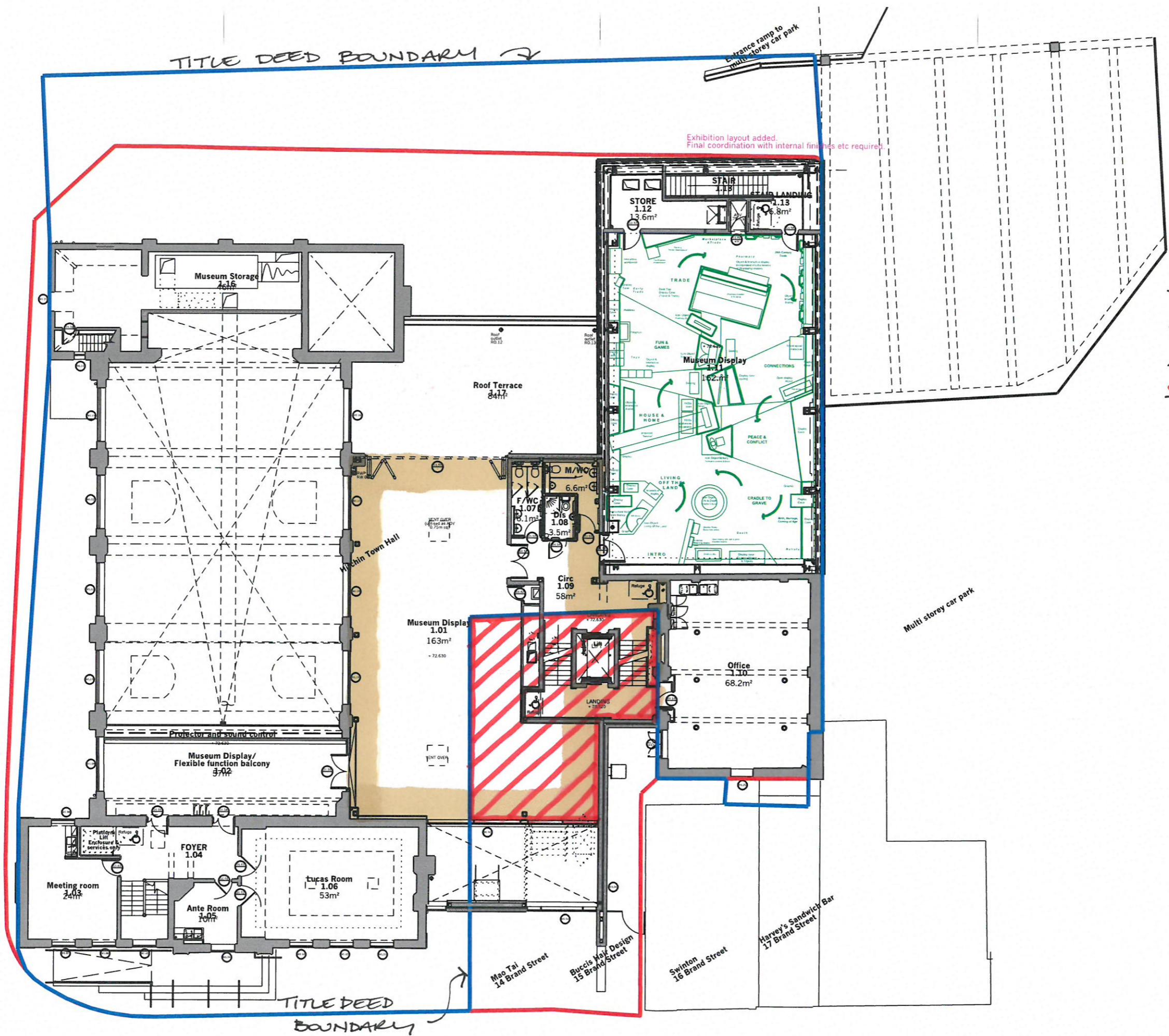
C7	Door handing updated	24/07/14	AY
C6	Museum store 0.14 and dividing wall omitted. Amendments shown clouded	10/04/14	AY
C5	Museum display general layout added	04/04/14	AY
C4	Position of fin wall amended following detailed survey of 16 Brand Street public wall.	12/03/14	AY
C3	Updated to reflect extent of demolitions. Amendments shown clouded	07/02/14	AY
C2	Amendments shown clouded	31/01/14	AY
C1	ISSUED FOR CONSTRUCTION	11/11/13	AY
E	Line of Junction added for Party Wall agreement	01/11/13	NC
T3	ISSUED FOR TENDER ADDENDUM Scheme amended to incorporate W0.53, W0.54, W0.55, D0.86 added.	26/07/13	AEY
D	Scheme updated ISSUED TO DESIGN TEAM FOR INFORMATION / COORDINATION	12/07/13	AEY
C	Plans added, scheme updated to incorporate 14/15 Brand Street ISSUED TO DESIGN TEAM FOR INFORMATION / COORDINATION	27/06/13	AEY
B	Scheme updated. ISSUED FOR CLIENT COMMENT	26/06/13	AY
T2	detail references omitted section references amended RE-ISSUED FOR TENDER	10/12/12	AY
T1	ISSUED FOR TENDER	30/11/12	AY
A	ISSUED FOR INFORMATION AND COORDINATION	08/10/12	AY

Hitchin Town Hall

Proposed plans  
 Ground floor  
 198 (04)003 Rev. C8  
 Date: 01/11/13 Scale: 1:100 @A1 Checked by: NC

Do not scale from drawing  
Dimensions are to be  
checked on site  
If in doubt please ask

GRAMMAR SCHOOL WALK



**NEW BUILD**  
GIFA

**EX 14/15 BRAND ST.**  
GIFA.

**CONSTRUCTION  
FINAL ISSUE**

C5	FINAL CONSTRUCTION ISSUE	10/04/15	AY
C4	Door handings updated	24/07/14	AY
C3	Exhibition layouts added.	04/04/14	AY
C2	Position of fin wall amended following detailed survey of 16 Brand Street public wall. Position of ADV relocated	12/03/14	AY
C1	ISSUED FOR CONSTRUCTION	11/11/13	AEY
T3	ISSUED FOR TENDER ADDENDUM ADV duct added.	26/07/13	AEY
D	ADV to windcatcher added scheme updated	12/07/13	AEY
C	Files added, scheme updated to incorporate 14&15 Brand Street ISSUED TO DESIGN TEAM FOR INFORMATION / COORDINATION	26/06/13	AEY
B	Scheme updated ISSUED FOR CLIENT COMMENT	26/06/13	AY
T2	Structural Grid added Detail references omitted Section references amended RE-ISSUED FOR TENDER	10/12/12	AY
T1	ISSUED FOR TENDER	30/11/12	AY
A	ISSUED FOR INFORMATION AND COORDINATION	08/11/12	AY

Hitchin Town Hall

Proposed plans  
First floor plan  
Date: 01/13  
Scale: 1:100 @A3  
Checked by: NC

BRAND STREET

IAD