

# Public Document Pack

## NORTH HERTFORDSHIRE DISTRICT COUNCIL

### CABINET PANEL ON TRANSPORT

TUESDAY, 18TH OCTOBER, 2022

### SUPPLEMENTARY AGENDA

Please find attached supplementary papers relating to the above meeting, as follows:

**Agenda No**   **Item**

5.        **CONSULTATION ON LOCAL CYCLING AND WALKING  
INFRASTRUCTURE PLAN** (Pages 3 - 16)

REPORT OF THE SENIOR TRANSPORT POLICY OFFICER

This page is intentionally left blank

# **North Herts Local Cycling and Walking Infrastructure Plan (LCWIP) Consultation**

Page 3

## **Cabinet Panel on Transport**

18 October 2022

Edward Leigh, Senior Transport Policy Officer

Agenda Item 5

# North Herts LCWIP Consultation

- Critically important document for securing government and developer funding to deliver:
  - Wider pavements
  - Safer junctions
  - Pedestrian and cycle crossings
  - Protected cycle lanes
  - Modal filters & other traffic management measures

Page 4

What are these?

# North Herts LCWIP Consultation

- This iteration of the LCWIP focuses on North Herts towns, Knebworth and Hitchin–Stevenage
- What about the rural areas?
- A number of priority routes in rural areas have already been identified in the LCWIP, but more resources will be required to audit these and propose interventions.
- HCC and NHDC have agreed to work in partnership to undertake a review of the LCWIP within two years of first adoption.
- *Subject to available funding and resources locally and nationally,* the intention is then to commission a second iteration of the LCWIP, covering all inter-urban routes and larger villages.

# North Herts LCWIP Consultation

- [hertfordshire.gov.uk/LCWIP-NorthHerts](https://hertfordshire.gov.uk/LCWIP-NorthHerts)
- Or search for 'LCWIP' on [hertfordshire.gov.uk](https://hertfordshire.gov.uk)
- Live now until **Monday 7 November**.
- **Please respond!**
- Please also spread the word and encourage other residents, local businesses and community groups to respond.

# North Herts LCWIP Consultation



Collection

## North Herts Local Cycling and Walking Infrastructure Plans

Local Cycling and Walking Infrastructure Plans (LCWIP's) are a new approach to identifying cycling and walking improvements required at a local level.

Click on any of the towns to view what we are proposing.



1 Hitchin



2 Interurban route - Hitchin to Stevenage



3 Letchworth Garden City



4 Baldock



5 Royston



6 Knebworth

# North Herts LCWIP Consultation



North Herts Local Cycling and Walking Infrastructure Plans



Hitchin

Interurban route - Hitchin to Stevenage

Letchworth Garden City

Baldock

Royston

Knebworth

Respond to the consultation and find out more



## Hitchin

Plans to improve facilities for people who walk and cycle

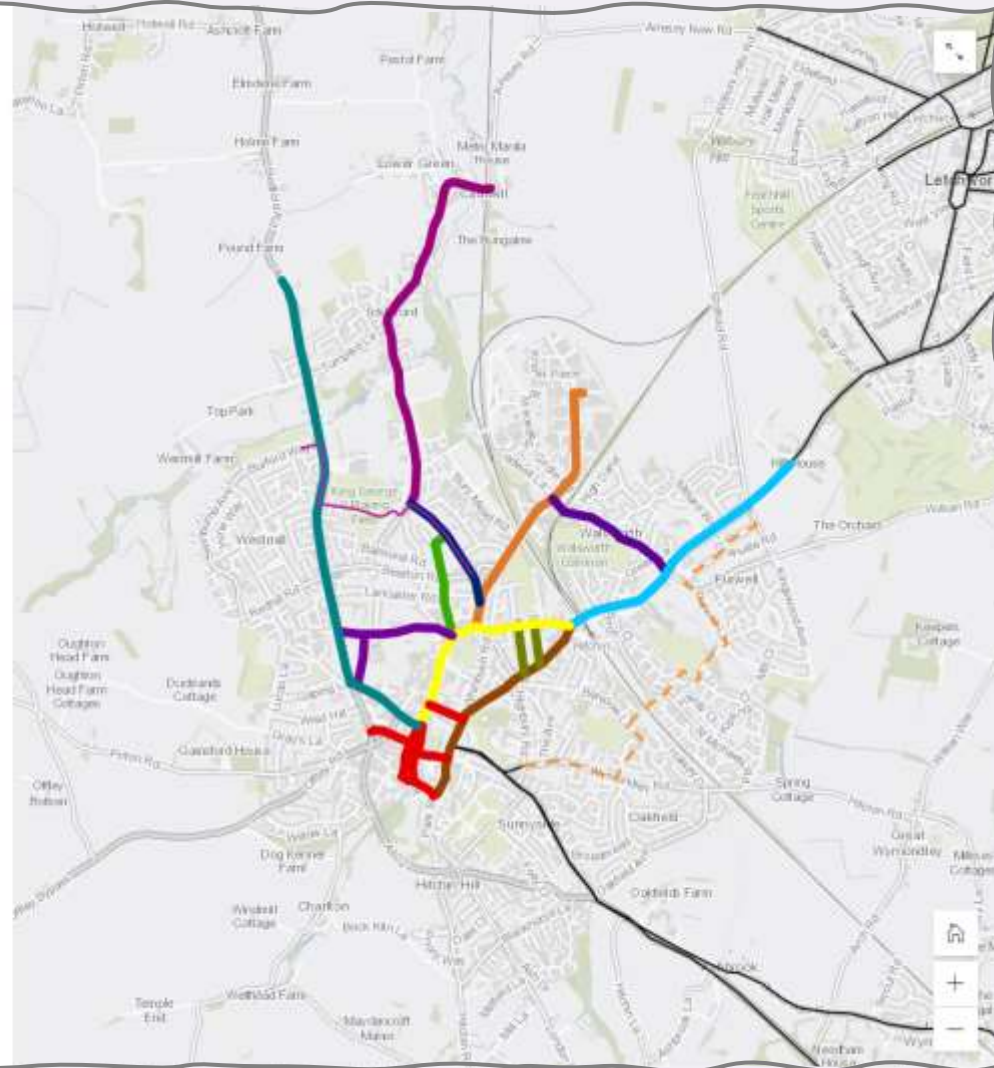


# North Herts LCWIP Consultation

The map shows an overview of the prioritised routes in Hitchin together with extended network links to Letchworth.

Click on any of the thick coloured lines to find out more or click on the button below if you want to comment on a specific area.

Have your say

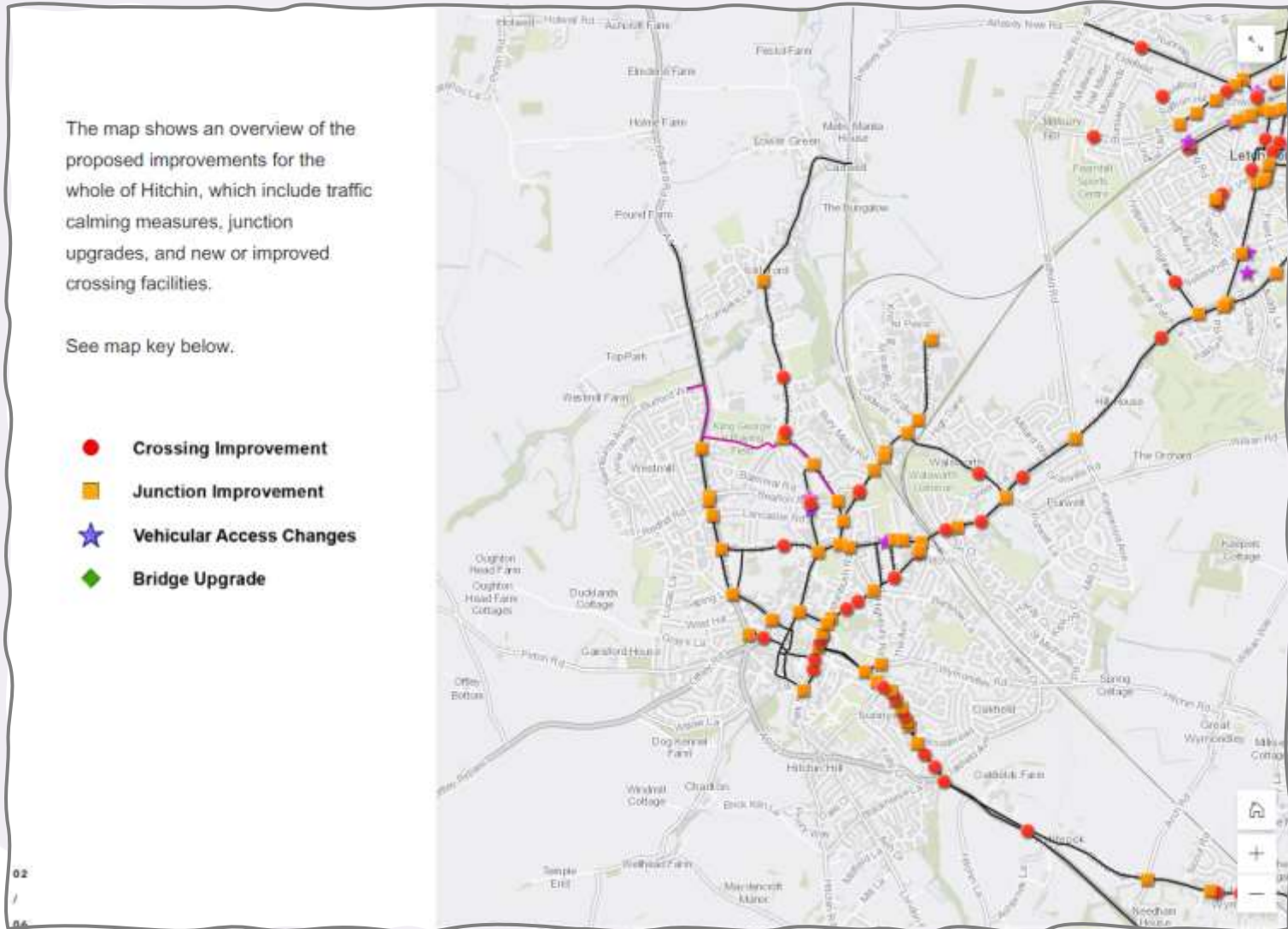


# North Herts LCWIP Consultation

The map shows an overview of the proposed improvements for the whole of Hitchin, which include traffic calming measures, junction upgrades, and new or improved crossing facilities.

See map key below.

- **Crossing Improvement**
- **Junction Improvement**
- ★ **Vehicular Access Changes**
- ◆ **Bridge Upgrade**

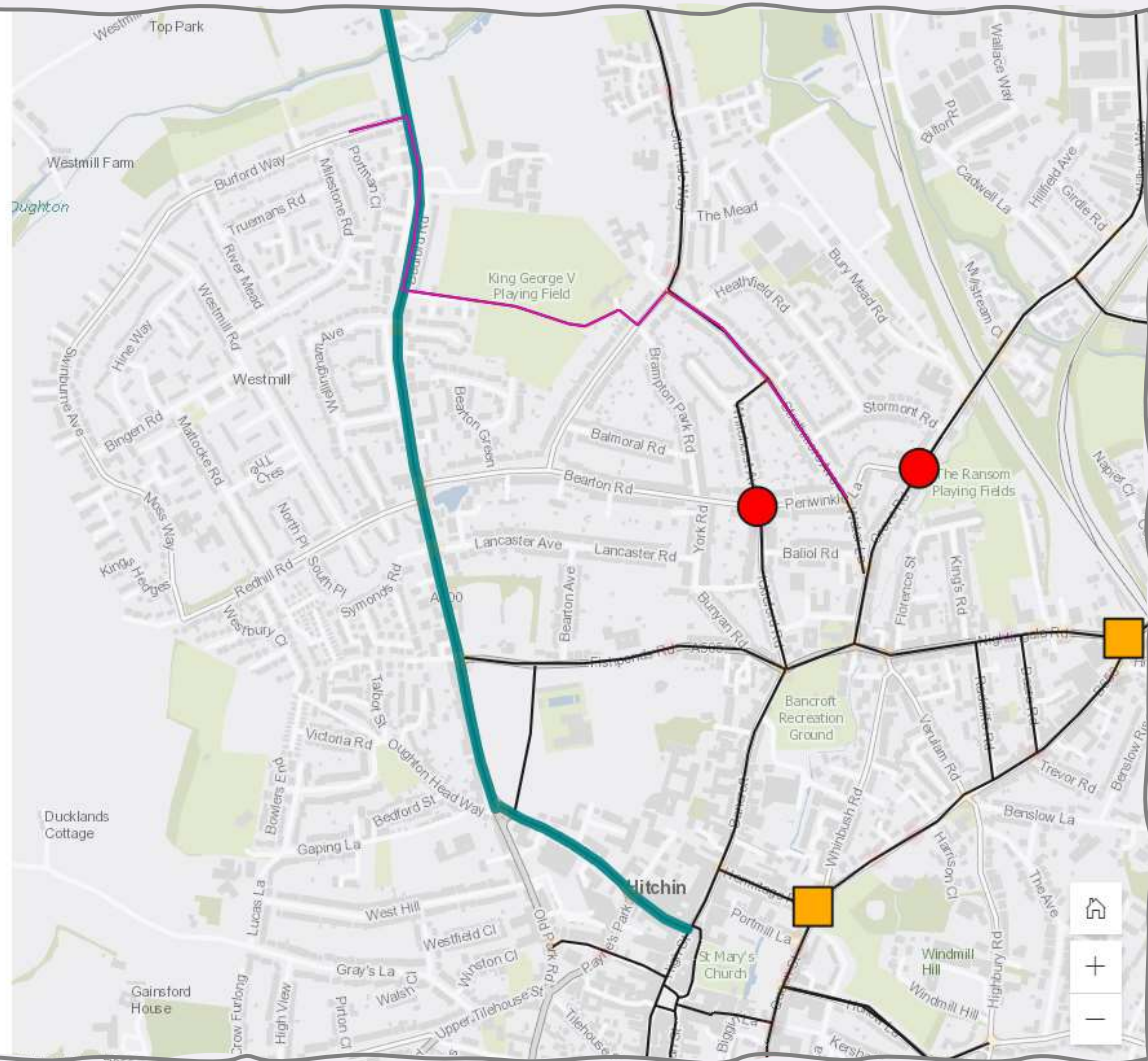


# North Herts LCWIP Consultation

At a glance...

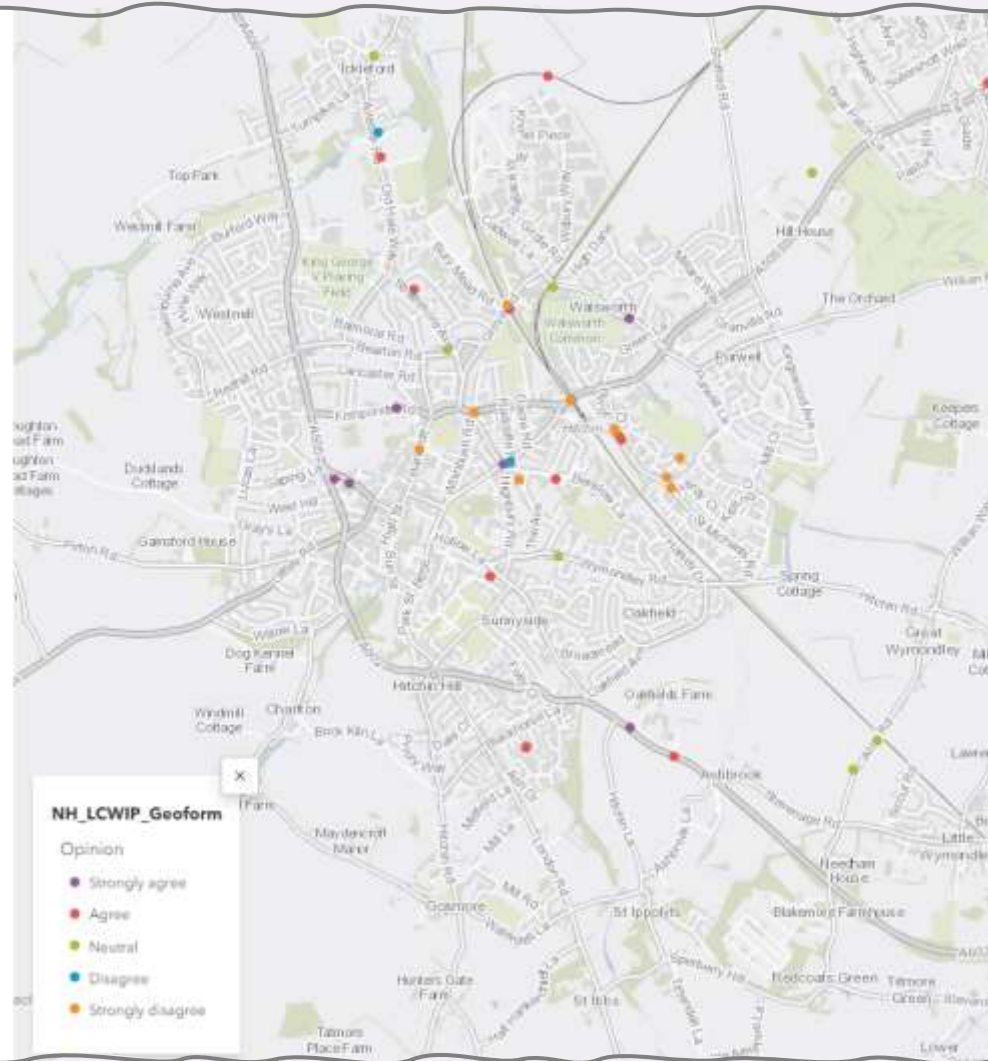
## Bedford Road and Brand Street

- Introduce a segregated cycleway and upgrade footway provision along Bedford Road linking The Priory School directly to the town centre; supported by traffic calming and junction improvements



# North Herts LCWIP Consultation

See what others have said




# North Herts LCWIP Consultation

### NH\_LCWIP\_Geoform: Cycle

Transport_Mode	Cycle
Opinion	Neutral
Comment	'Consider signalised crossings' on stv north A1 junction is nothing like strong enough. This is an extremely dangerous option without proper traffic control for cyclists. Travelling via chantry lane/fishers green is a far safer option, was this considered?

Zoom to

1 of 2



# North Herts LCWIP Consultation

## 1. Enter Information

What method of transport are you commenting on?

Select...

Do you agree with the proposals?

Select...

Let us know your comments

## 2. Select Location

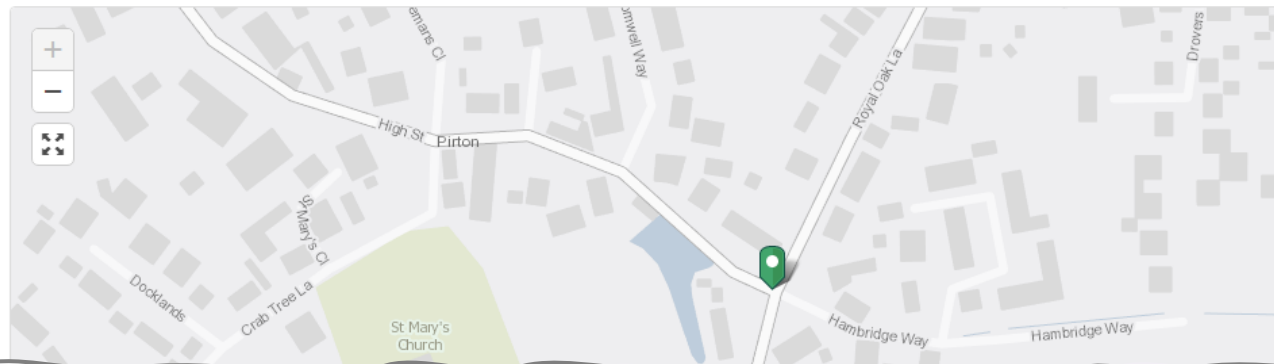
Specify the location for this entry by clicking/tapping the map or by using one of the following options.

Search

Find address

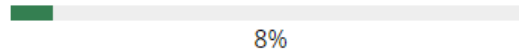


Locate Me



# North Herts LCWIP Consultation

## North Hertfordshire Local Cycling and Walking Infrastructure Plan



2. How have you reviewed the proposed LCWIP improvements?

- LCWIP document
- Storyboard
- Both

3. Do you support the proposed approach of the LCWIP in improving cycling and walking provision across North Hertfordshire?

- Yes
- No (please explain briefly why):

Previous Page

Next Page

This page is intentionally left blank