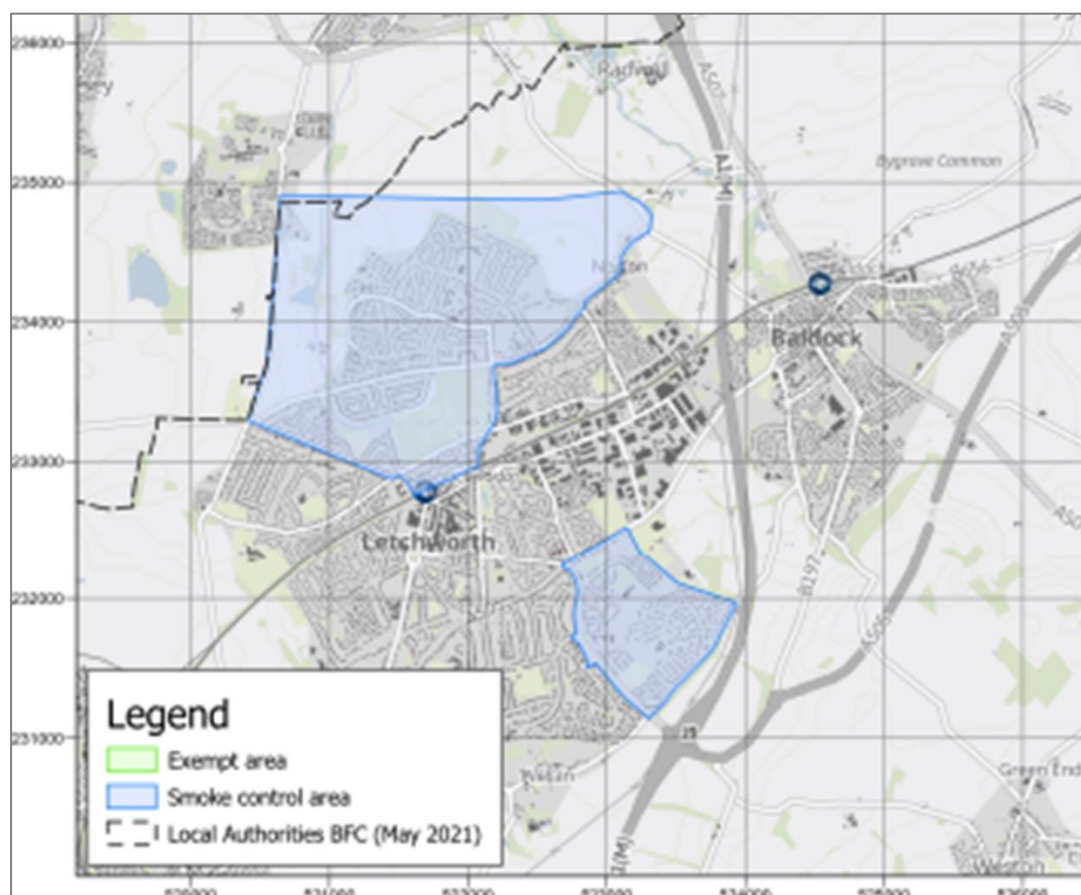


## Smoke Control Areas in North Hertfordshire 2025

The two figures below highlight locations of current smoke control areas, and concentrations of wood burners in North Hertfordshire,

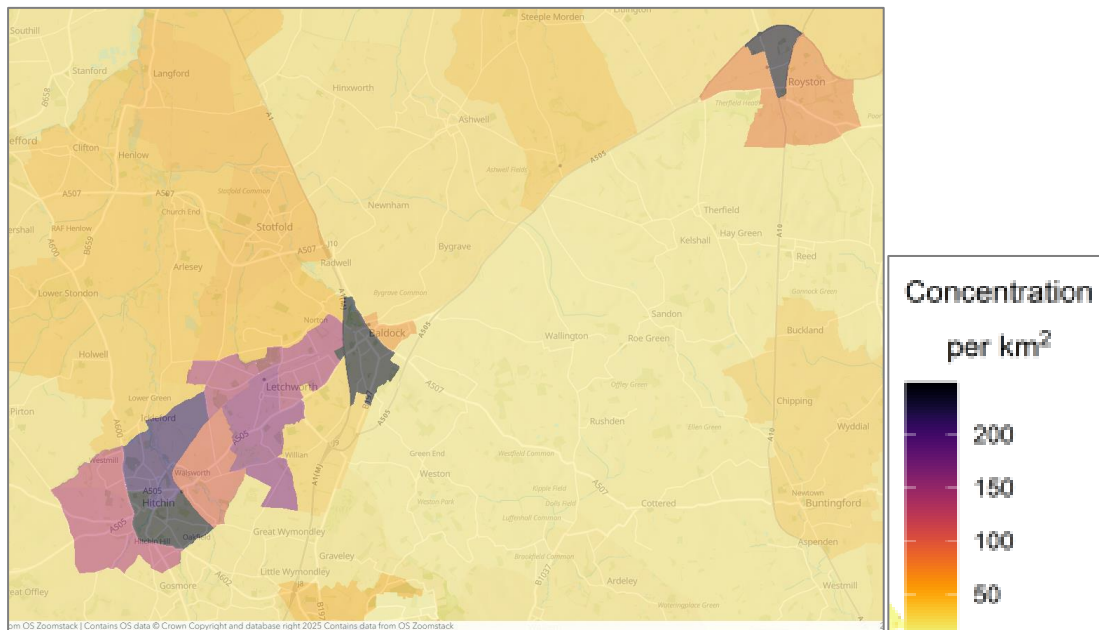


Smoke Control Areas in North Hertfordshire 2025

The Environment Act 2021 allows local authorities to issue financial penalties for emitting smoke from a chimney in a smoke control area in England. It means that in England, emitting smoke from a chimney is no longer a criminal offence, but rather subject to a civil penalty notice (a fine). The aim of this change was to make enforcement “quicker, simpler and more proportionate”. Local authorities in England can impose a financial penalty ranging from a minimum of £175 to a maximum of £300. The civil penalty provisions are set out in a new Schedule 1A to the Clean Air Act.

The Environment Act 2021 has also amended the Environmental Protection Act 1990 so that smoke emitted from a private dwelling in a smoke control area in England could be defined as a statutory nuisance if it were “prejudicial to health or a nuisance”.

## Prevalence of Wood Burners in North Hertfordshire



(Source: [The number of wood burners per km<sup>2</sup>](#) by electoral ward in North Hertfordshire)

### We estimate that there are:

- 196.1 wood burning heat sources per km<sup>2</sup> in Hitchin Highbury, and 13.9% of houses have a wood burner.
- 116.6 wood burning heat sources per km<sup>2</sup> in Hitchin Bearton, and 21.1% of houses have a wood burner.
- 131.2 wood burning heat sources per km<sup>2</sup> in Royston Palace, and 8.7% of houses have a wood burner.
- 146.8 wood burning heat sources per km<sup>2</sup> in Baldock Town, and 9.5% of houses have a wood burner
- 84.1 wood burning heat sources per km<sup>2</sup> in Letchworth South West, and 16.1% of houses have a wood burner
- 71.8 wood burning heat sources per km<sup>2</sup> in Letchworth Wilbury, and 5.8% of houses have a wood burner.

